

# Gift Box Assembly Instructions



## Prepare the Box Creases for easy assembly

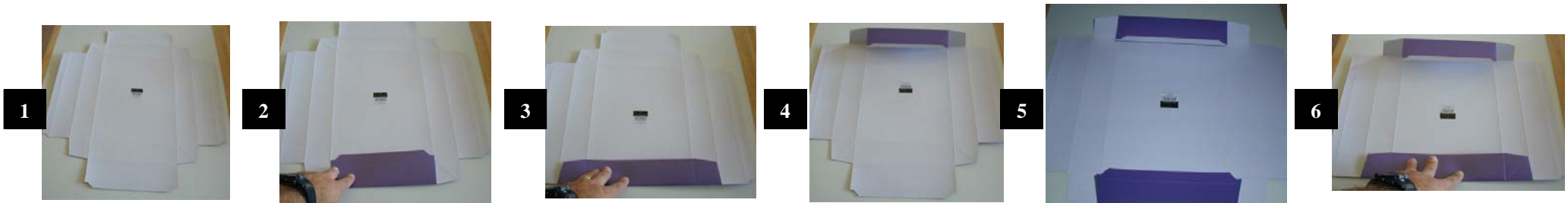


Photo 1,2,3 = Fold along the second crease from the bottom, then fold over again (creasing the 1st and 3rd crease)  
Photo 4,5,6 = Rotate box 180 degrees and repeat two folds

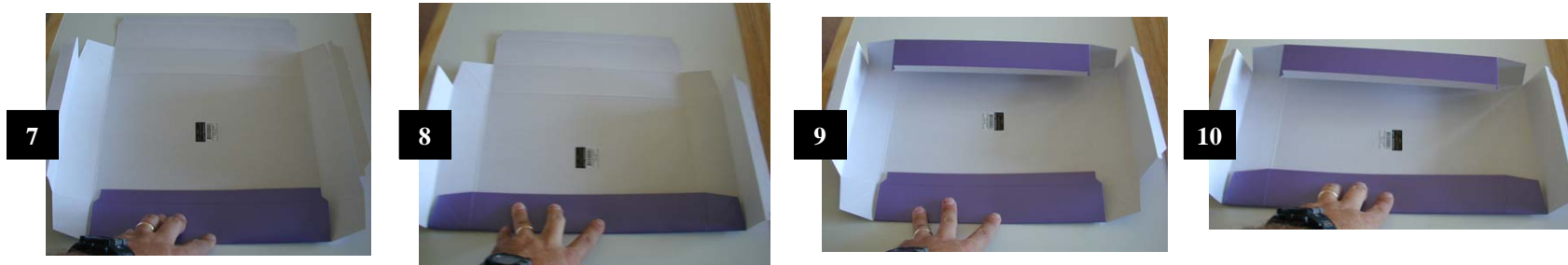


Photo 7,8,9,10 = Repeat two more times on long sides

## Assemble Box sides and secure with Locking Tabs



Photo 11,12 = Crease corner joint, then fold box side over and down to form end (see photo 13)  
Photo 14, 15 = Use locking tabs to secure the box  
Repeat these two steps for opposite box end  
**ASSEMBLE LID USING SAME METHOD**